



### 20006-3 Engine statistics data

Information >> Execution >> **Result**

**These values cannot be erased**

**Description**

Press the corresponding button to show the data

- Engine coolant temperature**  
Read out of the logged sensor values during the service life of the engine
- Oil temperature**  
Read out of the logged sensor values during the service life of the engine
- Oil pressure**  
Read out of the logged sensor values during the service life of the engine
- Vehicle speed**  
Read out of the logged sensor values during the service life of the engine
- Engine torque against engine speed**  
This shows how engine torque is used at different engine speeds

[Continue >](#)

Engine coolant temperature Oil temperature Oil pressure Vehicle speed

Engine torque against engine speed Engine brake usage

### Engine brake usage

% Time (h)

	500 rpm	600 rpm	800 rpm	900 rpm	950 rpm	1000 r...	1050 r...	1100 r...	1150 r...	1200 r...	1250 r...	1300 r...
30 %	9 h	228...	317...	691 h	620 h	958 h	115...	922 h	879 h	768 h	633 h	51
50 %	0 h	0 h	0 h	6 h	3 h	3 h	3 h	4 h	3 h	3 h	3 h	3 h
85 %	0 h	0 h	0 h	6 h	11 h	17 h	12 h	13 h	13 h	13 h	12 h	11
100 %	0 h	0 h	0 h	0 h	0 h	9 h	20 h	20 h	18 h	16 h	13 h	11
> 100%	0 h	0 h	0 h	0 h	0 h	0 h	0 h	0 h	0 h	0 h	0 h	0 h

## 20006-3 Engine statistics data

Information >> Execution >> Result

**These values cannot be erased**

### Description

Press the corresponding button to show the data

#### Engine coolant temperature

Read out of the logged sensor values during the service life of the engine

#### Oil temperature

Read out of the logged sensor values during the service life of the engine

#### Oil pressure

Read out of the logged sensor values during the service life of the engine

#### Vehicle speed

Read out of the logged sensor values during the service life of the engine

#### Engine torque against engine speed

This shows how engine torque is used at different engine speeds

Continue >

Engine brake usage

	1150 r...	1200 r...	1250 r...	1300 r...	1400 r...	1500 r...	1600 r...	1800 r...	2000 r...	2200 r...	2400 r...	> 2400 ..
h	879 h	768 h	633 h	515 h	688 h	395 h	231 h	194 h	54 h	21 h	0 h	0 h
	3 h	3 h	3 h	3 h	4 h	2 h	1 h	1 h	0 h	0 h	0 h	0 h
1	13 h	13 h	12 h	11 h	15 h	8 h	4 h	2 h	0 h	0 h	0 h	0 h
1	18 h	16 h	13 h	11 h	14 h	8 h	4 h	2 h	0 h	0 h	0 h	0 h
	0 h	0 h	0 h	0 h	0 h	0 h	0 h	0 h	0 h	0 h	0 h	0 h

20006-3 Engine statistics data

Information >> Execution >> Result

**These values cannot be erased**

Description

Press the corresponding button to show the data

**Engine coolant temperature**

Read out of the logged sensor values during the service life of the engine

**Oil temperature**

Read out of the logged sensor values during the service life of the engine

**Oil pressure**

Read out of the logged sensor values during the service life of the engine

**Vehicle speed**

Read out of the logged sensor values during the service life of the engine

**Engine torque against engine speed**

This shows how engine torque is used at different engine speeds

Continue >

Engine torque against engine speed Engine brake usage

### Engine torque against engine speed

	500 rpm	600 rpm	800 rpm	900 rpm	950 rpm	1000 r...	1050 r...	1100 r...	1150 r...	1200 r...	1250 r...
200 Nm	292...	597...	830...	118...	959...	125...	143...	135...	122...	100...	773...
400 Nm	34 s	195...	221...	575...	465...	956...	119...	445...	376...	271...	195...
600 Nm	72 s	115...	482...	259...	257...	359...	381...	340...	314...	252...	184...
800 Nm	203 s	709...	194...	172...	175...	232...	269...	262...	260...	228...	180...
1 kNm	381 s	427...	882...	103...	116...	173...	226...	226...	224...	200...	163...
1 kNm	527 s	370...	609...	704...	824...	133...	182...	171...	178...	164...	141...
1 kNm	1631 s	214...	559...	586...	663...	107...	142...	142...	152...	160...	145...
2 kNm	596 s	2542 s	344...	508...	607...	979...	129...	124...	126...	115...	106...
2 kNm	---	2 s	135...	320...	464...	799...	956...	866...	933...	101...	101...
2 kNm	---	1 s	1123 s	169...	284...	598...	804...	753...	823...	926...	946...
2 kNm	---	---	4 s	6391 s	151...	391...	627...	622...	694...	775...	737...
2 kNm	---	---	---	136 s	9255 s	278...	443...	510...	572...	542...	550...
3 kNm	---	---	---	5 s	1335 s	228...	603...	983...	135...	158...	166...
3 kNm	---	---	---	---	---	---	---	---	---	---	---
3 kNm	---	---	---	---	---	---	---	---	---	---	---
3 kNm	---	---	---	---	---	---	---	---	---	---	---
3 kNm	---	---	---	---	---	---	---	---	---	---	---
3 kNm	---	---	---	---	---	---	---	---	---	---	---

### 20006-3 Engine statistics data

Information >> Execution >> Result

**These values cannot be erased**

#### Description

Press the corresponding button to show the data

#### Engine coolant temperature

Read out of the logged sensor values during the service life of the engine

#### Oil temperature

Read out of the logged sensor values during the service life of the engine

#### Oil pressure

Read out of the logged sensor values during the service life of the engine

#### Vehicle speed

Read out of the logged sensor values during the service life of the engine

#### Engine torque against engine speed

This shows how engine torque is used at different engine speeds

Continue >

Engine torque against engine speed    Engine brake usage

Engine torque against engine speed

1150 r...	1200 r...	1250 r...	1300 r...	1400 r...	1500 r...	1600 r...	1800 r...	2000 r...	2200 r...	2400 r...	>2400 r...
122...	100...	773...	576...	673...	354...	185...	127...	291...	5368 s	363 s	40 s
376...	271...	195...	152...	241...	161...	107...	113...	365...	154...	127 s	---
314...	252...	184...	141...	202...	125...	825...	816...	259...	186...	22 s	---
260...	228...	180...	145...	212...	125...	793...	716...	206...	115...	6 s	---
224...	200...	163...	129...	182...	112...	688...	657...	177...	8745 s	1 s	---
178...	164...	141...	122...	179...	109...	570...	467...	143...	6461 s	---	---
152...	160...	145...	119...	145...	785...	480...	429...	124...	4531 s	---	---
126...	115...	106...	978...	141...	819...	501...	378...	9827 s	4172 s	---	---
933...	101...	101...	975...	144...	745...	386...	274...	110...	896 s	---	---
823...	926...	946...	869...	115...	569...	320...	253...	142...	---	---	---
694...	775...	737...	657...	870...	518...	284...	542...	4449 s	---	---	---
572...	542...	550...	524...	719...	744...	814...	180...	---	---	---	---
135...	158...	166...	148...	198...	792...	26 s	---	---	---	---	---
---	---	---	---	---	---	---	---	---	---	---	---
---	---	---	---	---	---	---	---	---	---	---	---

20006-3 Engine statistics data

Information >> Execution >> Result

These values cannot be erased

Description

Press the corresponding button to show the data

**Engine coolant temperature**

Read out of the logged sensor values during the service life of the engine

**Oil temperature**

Read out of the logged sensor values during the service life of the engine

**Oil pressure**

Read out of the logged sensor values during the service life of the engine

**Vehicle speed**

Read out of the logged sensor values during the service life of the engine

**Engine torque against engine speed**

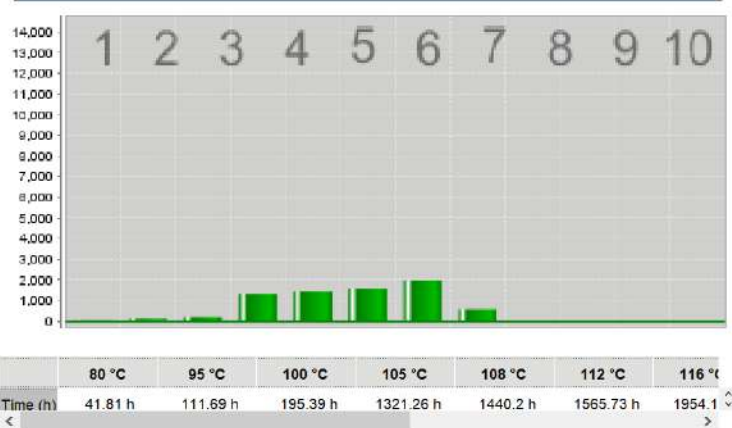
This shows how engine torque is used at different engine speeds

Continue >

Engine torque against engine speed Engine brake usage

Oil temperature

% Time (h)



20006-3 Engine statistics data

Information >> Execution >> Result

These values cannot be erased

Description

Press the corresponding button to show the data

Engine coolant temperature

Read out of the logged sensor values during the service life of the engine

Oil temperature

Read out of the logged sensor values during the service life of the engine

Oil pressure

Read out of the logged sensor values during the service life of the engine

Vehicle speed

Read out of the logged sensor values during the service life of the engine

Engine torque against engine speed

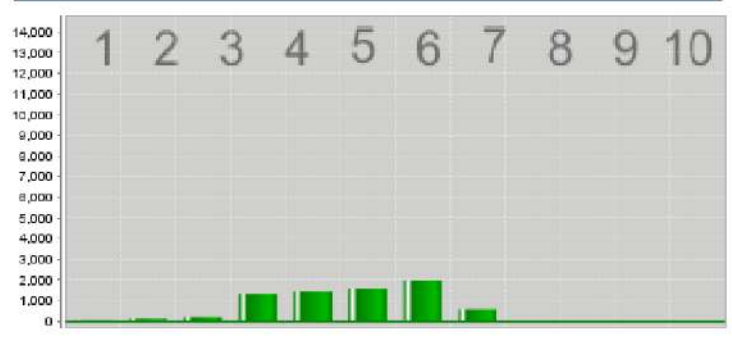
This shows how engine torque is used at different engine speeds

Continue >

Engine torque against engine speed Engine brake usage

### Oil temperature

% Time (h)



112 °C	116 °C	120 °C	123 °C	125 °C	127 °C	>127 °C
1565.73 h	1954.11 h	582.64 h	6.22 h	0 h	0 h	0 h

## 20006-3 Engine statistics data

Information >> Execution >> Result

**These values cannot be erased**

### Description

Press the corresponding button to show the data

#### Engine coolant temperature

Read out of the logged sensor values during the service life of the engine

#### Oil temperature

Read out of the logged sensor values during the service life of the engine

#### Oil pressure

Read out of the logged sensor values during the service life of the engine

#### Vehicle speed

Read out of the logged sensor values during the service life of the engine

#### Engine torque against engine speed

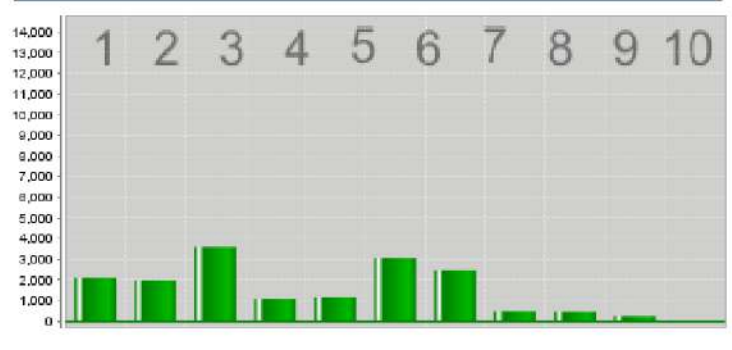
This shows how engine torque is used at different engine speeds

Continue >

Engine torque against engine speed Engine brake usage

### Engine oil pressure

% Time (h)



	50 kPa	100 kPa	150 kPa	210 kPa	220 kPa	350 kPa	450 kPa	550 kPa
Time (h)	2097.37 h	1963.01 h	3593.76 h	1087.2 h	1161.82 h	3063.85 h	2480.71 h	477.05 h

## 20006-3 Engine statistics data

Information >> Execution >> Result

**These values cannot be erased**

### Description

Press the corresponding button to show the data

#### Engine coolant temperature

Read out of the logged sensor values during the service life of the engine

#### Oil temperature

Read out of the logged sensor values during the service life of the engine

#### Oil pressure

Read out of the logged sensor values during the service life of the engine

#### Vehicle speed

Read out of the logged sensor values during the service life of the engine

#### Engine torque against engine speed

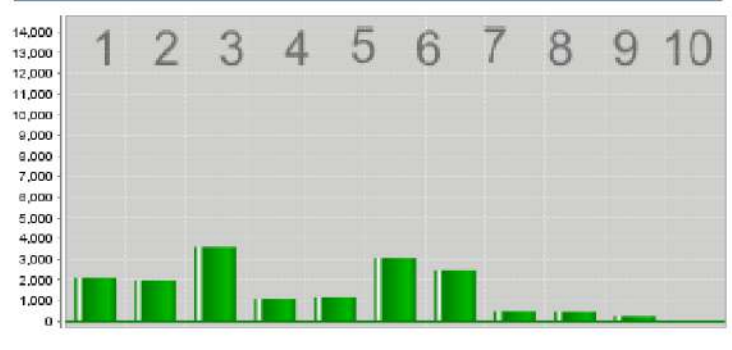
This shows how engine torque is used at different engine speeds

Continue >

Engine torque against engine speed Engine brake usage

### Engine oil pressure

% Time (h)



a	210 kPa	220 kPa	350 kPa	450 kPa	550 kPa	650 kPa	700 kPa	>700 kPa
h	1087.2 h	1161.82 h	3063.85 h	2480.71 h	477.09 h	456.73 h	229.96 h	0 h

## 20006-3 Engine statistics data

Information >> Execution >> Result

**These values cannot be erased**

### Description

Press the corresponding button to show the data

#### Engine coolant temperature

Read out of the logged sensor values during the service life of the engine

#### Oil temperature

Read out of the logged sensor values during the service life of the engine

#### Oil pressure

Read out of the logged sensor values during the service life of the engine

#### Vehicle speed

Read out of the logged sensor values during the service life of the engine

#### Engine torque against engine speed

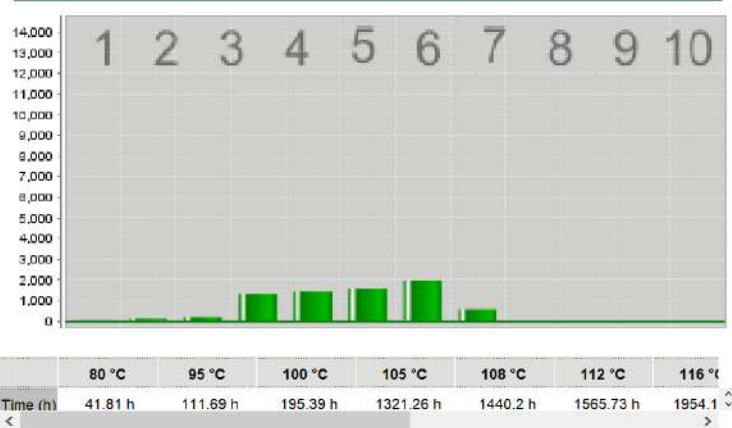
This shows how engine torque is used at different engine speeds

Continue >

Engine torque against engine speed Engine brake usage

### Oil temperature

% Time (h)



## 20006-3 Engine statistics data

Information >> Execution >> Result

**These values cannot be erased**

### Description

Press the corresponding button to show the data

#### Engine coolant temperature

Read out of the logged sensor values during the service life of the engine

#### Oil temperature

Read out of the logged sensor values during the service life of the engine

#### Oil pressure

Read out of the logged sensor values during the service life of the engine

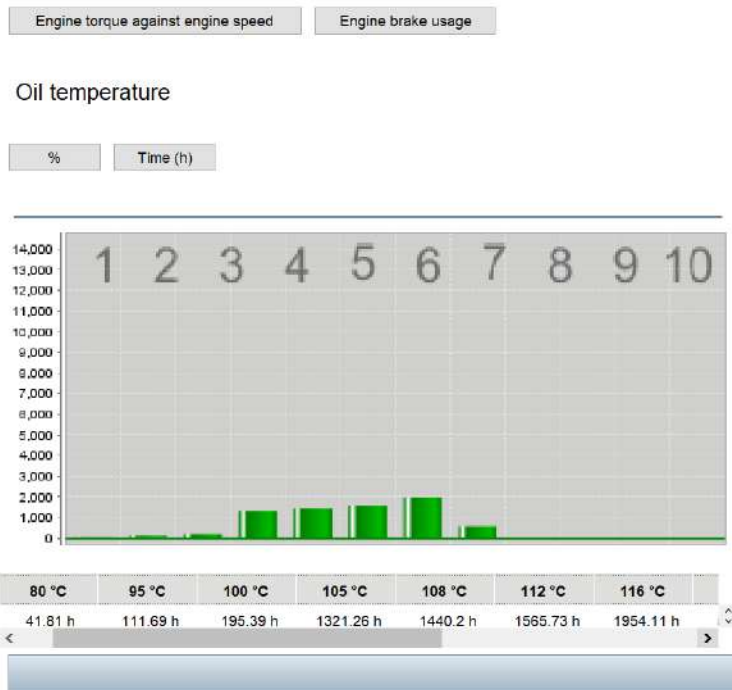
#### Vehicle speed

Read out of the logged sensor values during the service life of the engine

#### Engine torque against engine speed

This shows how engine torque is used at different engine speeds

Continue >



### 20006-3 Engine statistics data

Information >> Execution >> Result

**These values cannot be erased**

#### Description

Press the corresponding button to show the data

- Engine coolant temperature**  
Read out of the logged sensor values during the service life of the engine
- Oil temperature**  
Read out of the logged sensor values during the service life of the engine
- Oil pressure**  
Read out of the logged sensor values during the service life of the engine
- Vehicle speed**  
Read out of the logged sensor values during the service life of the engine
- Engine torque against engine speed**  
This shows how engine torque is used at different engine speeds

Continue >

Volvo Tech Tool Monam Priya Choudhary

Tech Tool Links Help

Product Product History Diagnose Test Calibrate Program Impact

Engine torque against engine speed Engine brake usage

### Oil temperature

% Time (h)

Temperature (°C)	Time (h)
105 °C	1321.26 h
108 °C	1440.2 h
112 °C	1565.73 h
116 °C	1954.11 h
120 °C	582.64 h
123 °C	6.22 h
125 °C	0 h

### 20006-3 Engine statistics data

Information >> Execution >> Result

**These values cannot be erased**

#### Description

Press the corresponding button to show the data

- Engine coolant temperature**  
Read out of the logged sensor values during the service life of the engine
- Oil temperature**  
Read out of the logged sensor values during the service life of the engine
- Oil pressure**  
Read out of the logged sensor values during the service life of the engine
- Vehicle speed**  
Read out of the logged sensor values during the service life of the engine
- Engine torque against engine speed**  
This shows how engine torque is used at different engine speeds

Continue >